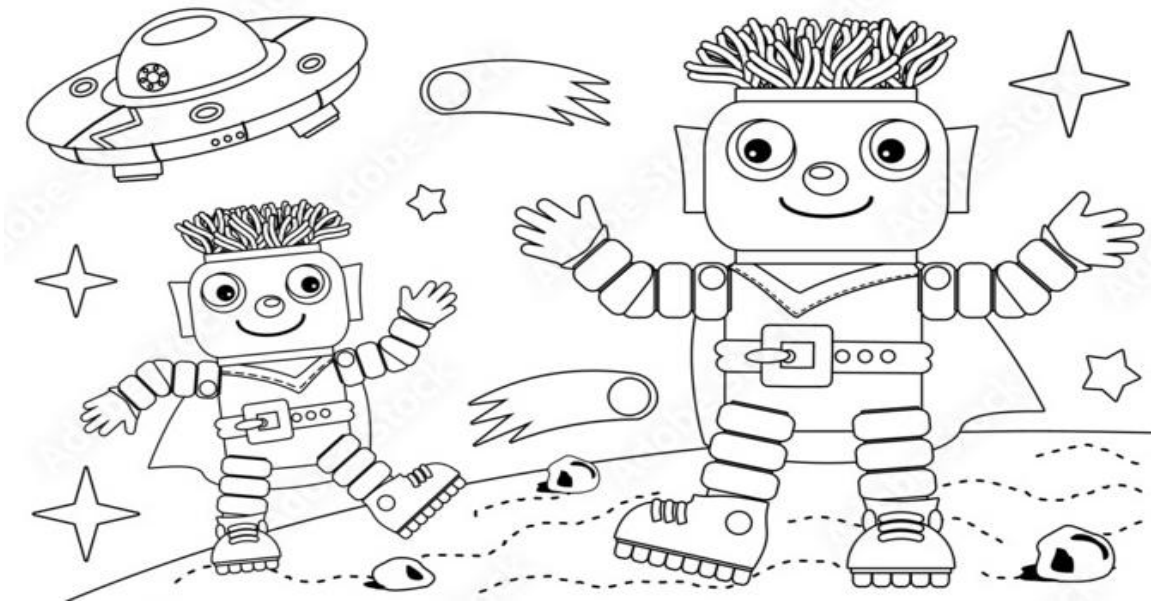
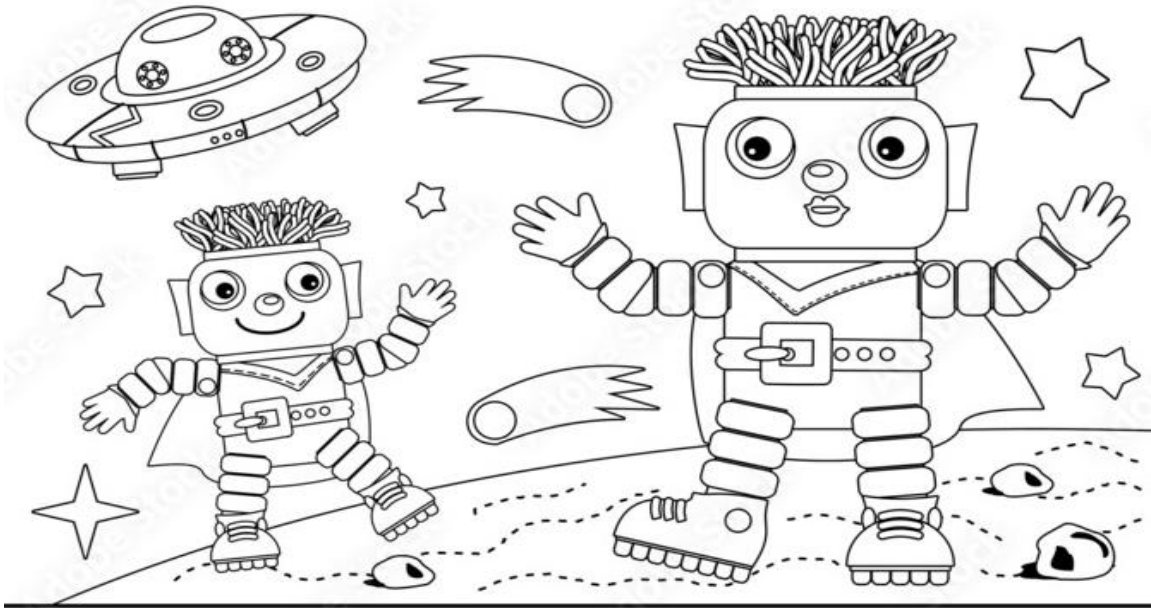


FIND The 10 Best Movie Robots

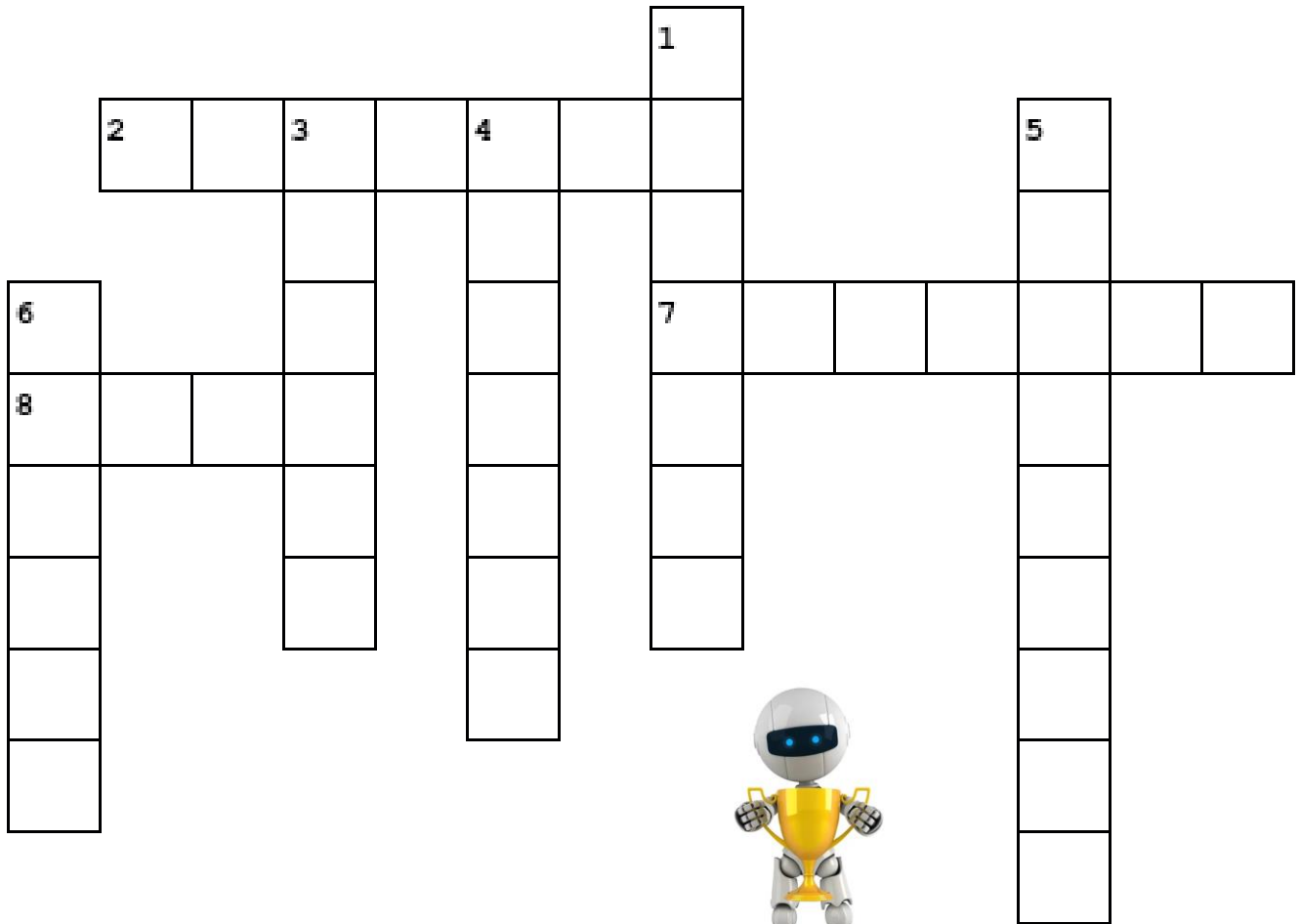
C	R	A	X	L	Y	A	O	R	M
H	I	S	T	T	R	I	P	B	A
A	M	B	C	E	A	D	T	N	R
P	B	A	Y	M	A	X	I	A	V
P	O	V	N	M	T	E	M	B	I
I	R	O	N	M	A	N	U	C	N
E	W	A	L	L	E	O	S	O	I
E	G	T	F	C	Z	D	P	M	K
A	T	O	M	E	U	A	R	O	N
R	O	B	O	C	O	P	I	Q	Y
I	H	T	P	H	D	N	M	A	E
B	U	M	B	L	E	B	E	E	R



SPOT THE 10 DIFFERENCE



Famous Film Robots



Across

- 2. Cop Alex Murphy (Peter Weller) is the
- 7. American Superhero Marvel Robot
- 8. A robot from Real Steel who was found in the junkyard and repaired by Max & Charlie.

Down

- 1. PRIME The awe-inspiring leader of the Autobot forces.
- 3. Robot who care about health's people
- 4. One police droid is stolen and given new programming, he acquires the ability to feel and think for himself.
- 5. A member of Rodimus's crew from Transformers
- 6. The last robot left on Earth

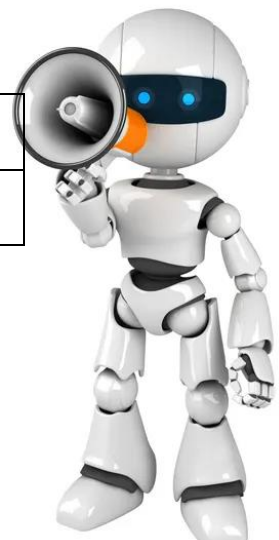
DECODE THE MESSAGE

9		1	13		1		18	15	2	15	20
13	25		14	1	13	5		9	19		
18	15	2	15		9		12	15	22	5	
14	21	13	2	5	18	19					

1	2	3	4	5	6	7	8	9	10
A	B	C	D	E	F	G	H	I	J

11	12	13	14	15	16	17	18	19	20
K	L	M	N	O	P	Q	R	S	T

21	22	23	24	25	26
U	V	W	X	Y	Z



JUMBLED LETTERS

R	E	T	D	O	P	E	L	A	T	E	E

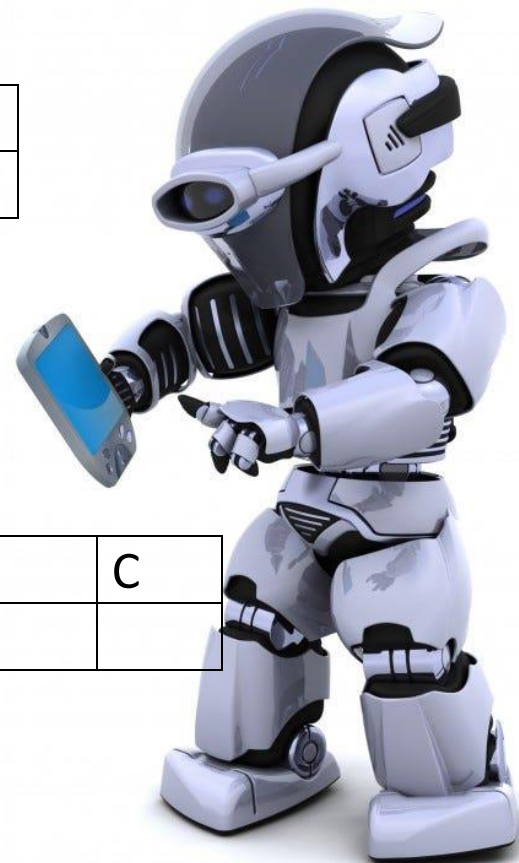
R	N	S	L	D	T	I	I	A	U

N	E	O	D	R

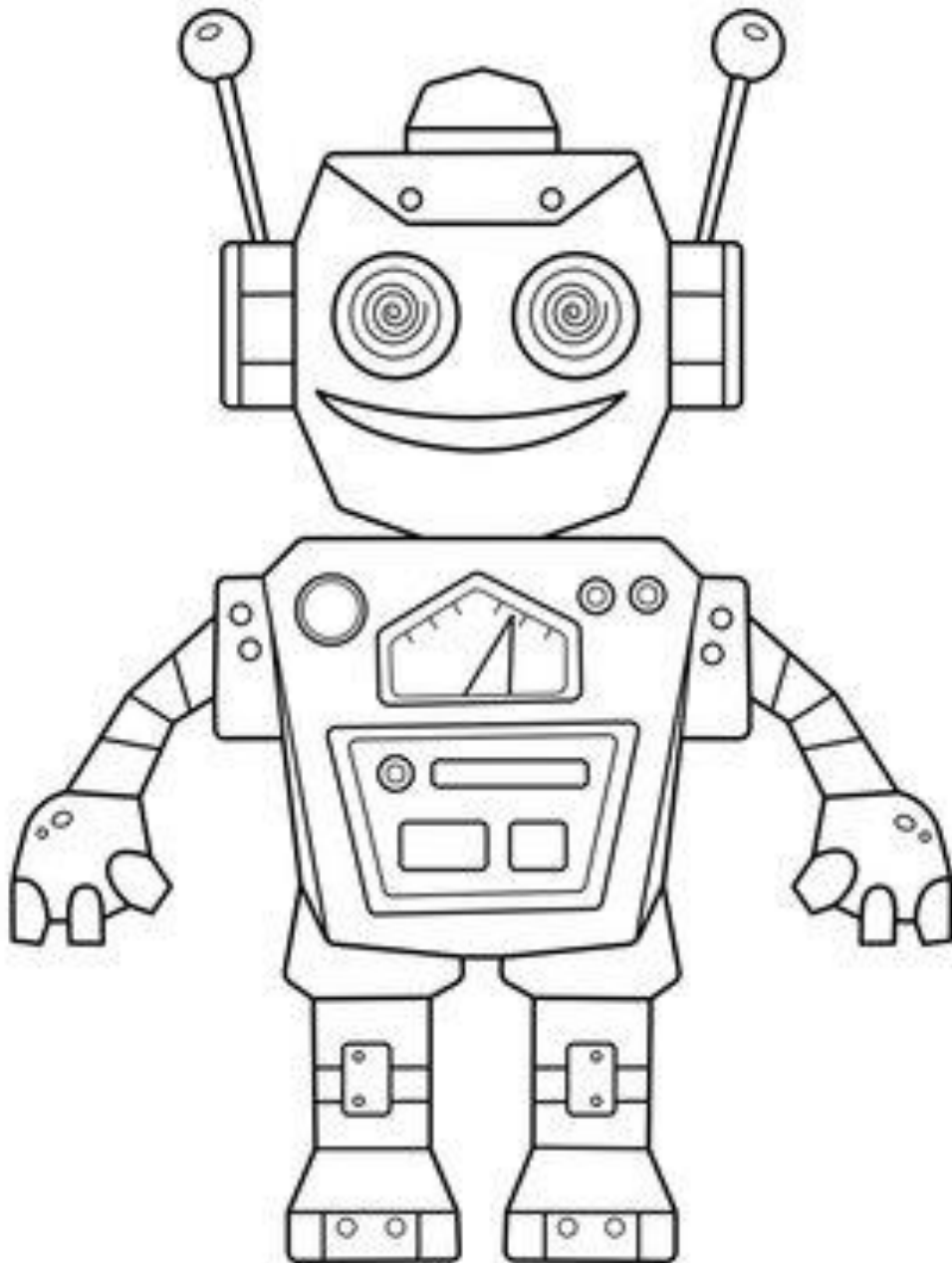
E	O	G	O	T	N	H	C	Y	L

R	E	N	S	S	O	S

O	R	O	B	T	C	S	I	C



Color the ROBOT



1.

Answer the questions and find the hidden word.

1. Question: Which part of a robot is like its "sensing eye"? (5 letters)
2. Question: What type of robots can fly in the sky without a pilot? (8 letters)
3. Question: What do we call a small robot you can control with a remote? (9 letters)
4. Question: What's the name of the robot exploring Mars? (5 letters)
5. Question: A feeling that robots don't feel (7 letters)
6. Question: What are robots? (7 letters)
7. Question: What energy source do most robots need? (10 letters)
8. Question: What do robots use to move around? (6 letters)

1) _ _ _ _ _ _

2) _ _ _ _ _ _

3) _ _ _ _ _ _ _ _ _ _

4) _ _ _ _ _

5) _ _ _ _ _ _ _ _

6) _ _ _ _ _ _ _ _ _

7) _ _ _ _ _ _ _ _ _ _ _ _

8) _ _ _ _ _

